



For those keen to discover, we have the perfect setting.

CAFÉ WALK (500m approx. 15mins)

Flat loop walking through hand planted, regenerating shrub land backing onto beach dunes. Historically the adjacent area was estuary. There is visible pumice originating from the Taupo Eruption.

BOARD WALK (1.6km approx. 20mins)

Gentle walk circling man-made wetland and rich duck habitat. Likely to see Paradise Shell Ducks and Grey Ducks, Dab Chicks and Kingfisher. Dam contains Mullet in fresh water phase and Short Finned Eel. *Special interest: Rare Bittern.*

BEACH WALK (2km approx. 25mins)

Flat walk to beach, many bird species, including wetland and shore birds. *Special interest: Dotterel and occasional Bittern.*

ESTUARY WALK (2km approx. 25mins)

Takes you through planted areas and wide open spaces. Views of both sea and estuary. Pipits are common, you will also see Yellow Hammer and Green Finches.

RIDGE WALK (3.5km approx. 45mins)

This walk is a little more challenging taking you along a ridge line. You will cross another man-made dam rich in bird life, including our resident Black Swan. You will see great views, before entering a bush track. Look out for Pipit, Tui and Silver Eye.

FOREST WALK (3km approx. 1.5hrs)

A challenging walk, showcasing native forest along a winding bush trail including several hills. Likely to see Tui, Kukupa, Silver Eye, and Fantails.

ALL WALKS ARE MARKED, PLEASE KEEP TO TRACKS.

Please Read

HEALTH & SAFETY

Your safety is important to us and to ensure that you enjoy your experience, please follow the instructions of your guides and the advice below:

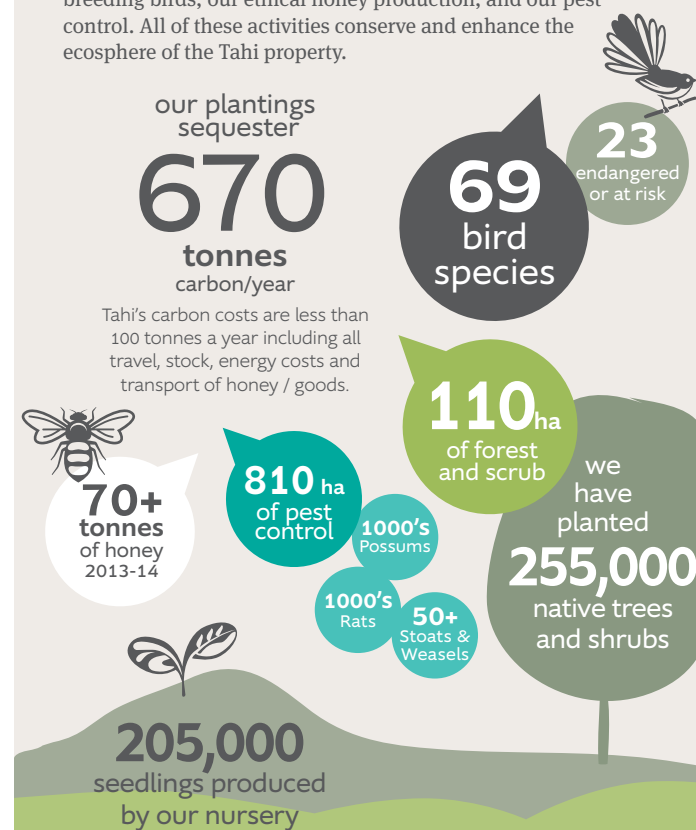
- Keep to the marked track.
- Keep to the left of the road and listen out for any vehicles at points where the route includes vehicle access roads.
- Choose walks within your fitness level.
- Wear suitable footwear with good ankle support.
- Remain hydrated, protected from the sun, and take water.
- Supervise children at all times.
- Alert your guide should you require assistance at any time during the guided tour.
- Please make sure you have appropriate footwear as we will be walking to the honey processing plant.
- Remain within the roped area as we walk past the Tahi Farm buildings.
- You will be provided with garments to wear as you enter the honey processing area for hygiene purposes.
- Be aware that the processing plant contains equipment that could cause injury so remain at a safe distance as directed by your guide.

at Tahi you can choose to do a little or a lot.

Our Approach

All Tahi's efforts are guided by a deep sense of social and environmental responsibility. We passionately aim to preserve and restore the land and the things that live on it for future generations to enjoy.

This is reflected in our extensive wetland rejuvenation and replanting of native forest, our stewardship of Tahi's distinctive flora and fauna, our active encouragement of breeding birds, our ethical honey production, and our pest control. All of these activities conserve and enhance the ecosphere of the Tahi property.



TAHI 1824 Pataua North Road, RD 5,
Whangarei 0175, New Zealand
P +64 (9) 436 0082 E hello@tahinz.com
F www.facebook.com/TahiBeach

NATURE SANCTUARY. RETREAT. www.tahinz.com
SUSTAINABLE HONEY. www.tahihoney.co.nz

Tahi explore

You can explore Tahi Nature Sanctuary's 300 hectares of native forest at your own pace, learn our environmental ways or just relax and take it all in. There's a wealth of enjoyable activities amongst our wetlands and parklands, large estuary and long surf beach...enjoy

OHUATAHI PĀ SITE

↑ TO WHANGAREI

PATAUA NORTH ROAD

ESTUARY

PATAUA NORTH

MAP KEY

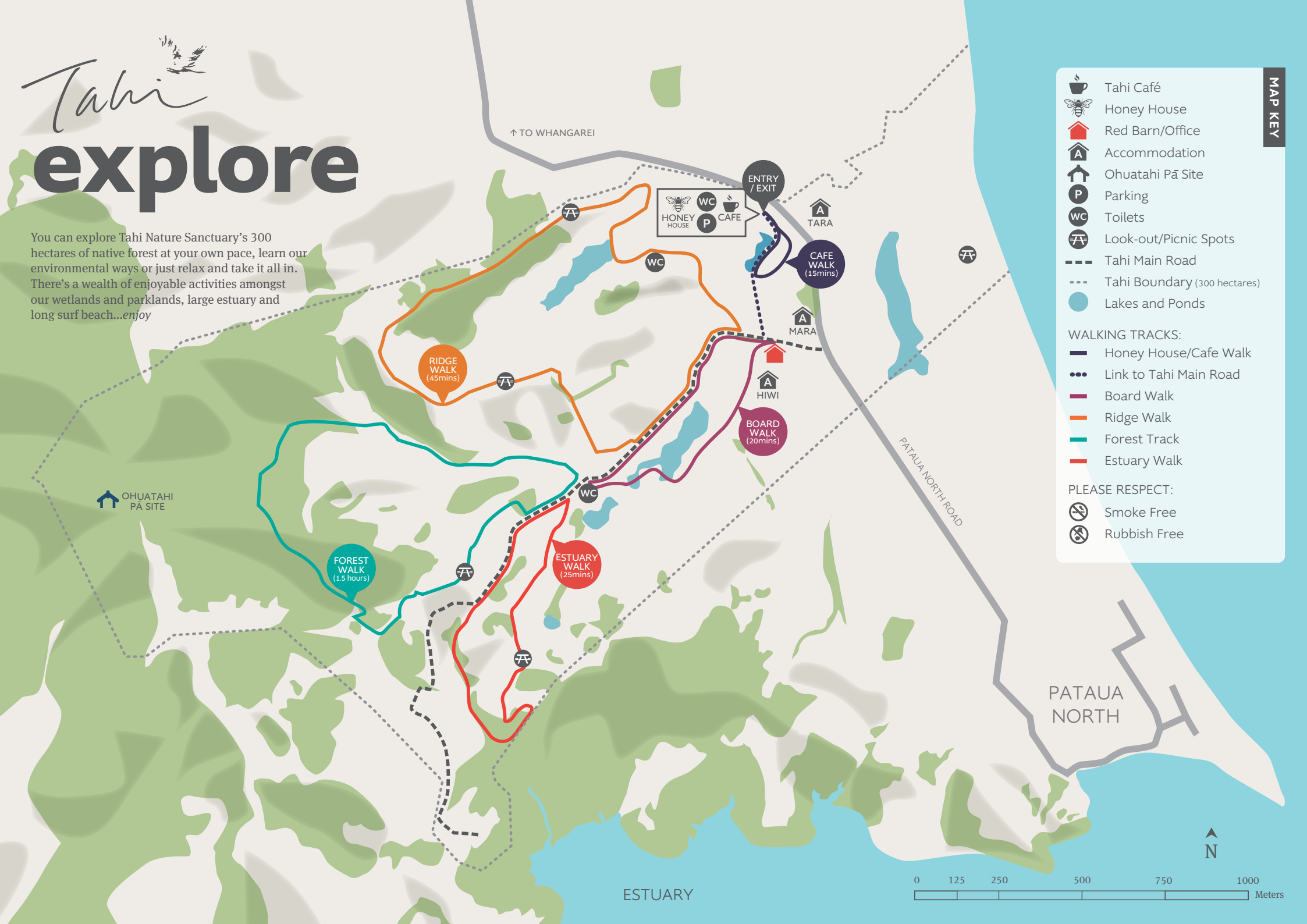
- Tahi Café
- Honey House
- Red Barn/Office
- Accommodation
- Ohuatahi Pā Site
- Parking
- Toilets
- Look-out/Picnic Spots
- Tahi Main Road
- Tahi Boundary (300 hectares)
- Lakes and Ponds

WALKING TRACKS:

- Honey House/Cafe Walk
- Link to Tahi Main Road
- Board Walk
- Ridge Walk
- Forest Track
- Estuary Walk

PLEASE RESPECT:

- Smoke Free
- Rubbish Free



Tahi explore

You can explore Tahi Nature Sanctuary's 300 hectares of native forest at your own pace, learn our environmental ways or just relax and take it all in. There's a wealth of enjoyable activities amongst our wetlands and parklands, large estuary and long surf beach...*enjoy*

OHUATAHI PĀ SITE

↑ TO WHANGAREI

HONEY HOUSE
WC CAFE
P

ENTRY / EXIT

TARA

CAFE WALK (15mins)

MARA

HIWI

BOARD WALK (20mins)

ESTUARY WALK (25mins)

FOREST WALK (1.5 hours)

PATAUA NORTH ROAD

PATAUA NORTH

ESTUARY

MAP KEY

- Tahi Café
- Honey House
- Red Barn/Office
- Accommodation
- Ohuatahi Pā Site
- Parking
- Toilets
- Look-out/Picnic Spots
- Tahi Main Road
- Tahi Boundary (300 hectares)
- Lakes and Ponds

WALKING TRACKS:

- Honey House/Cafe Walk
- Link to Tahi Main Road
- Board Walk
- Forest Track
- Estuary Walk

PLEASE RESPECT:

- Smoke Free
- Rubbish Free

